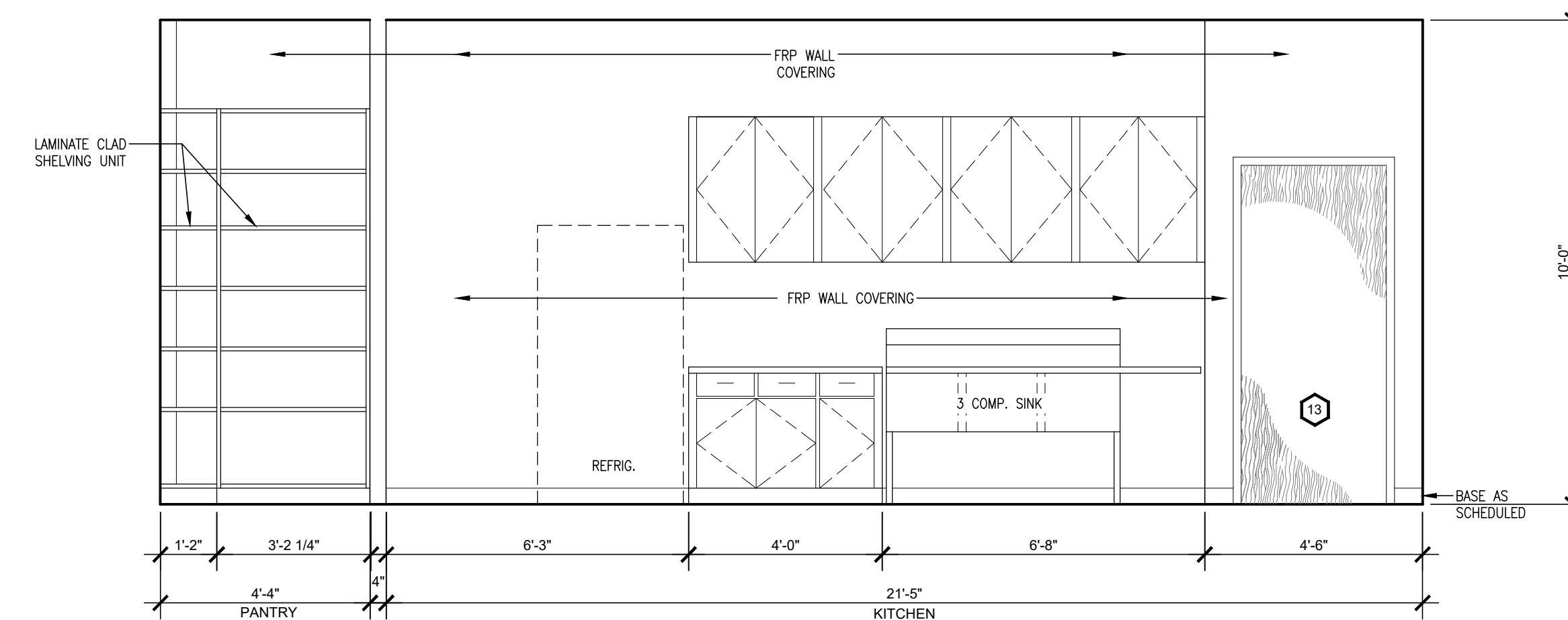
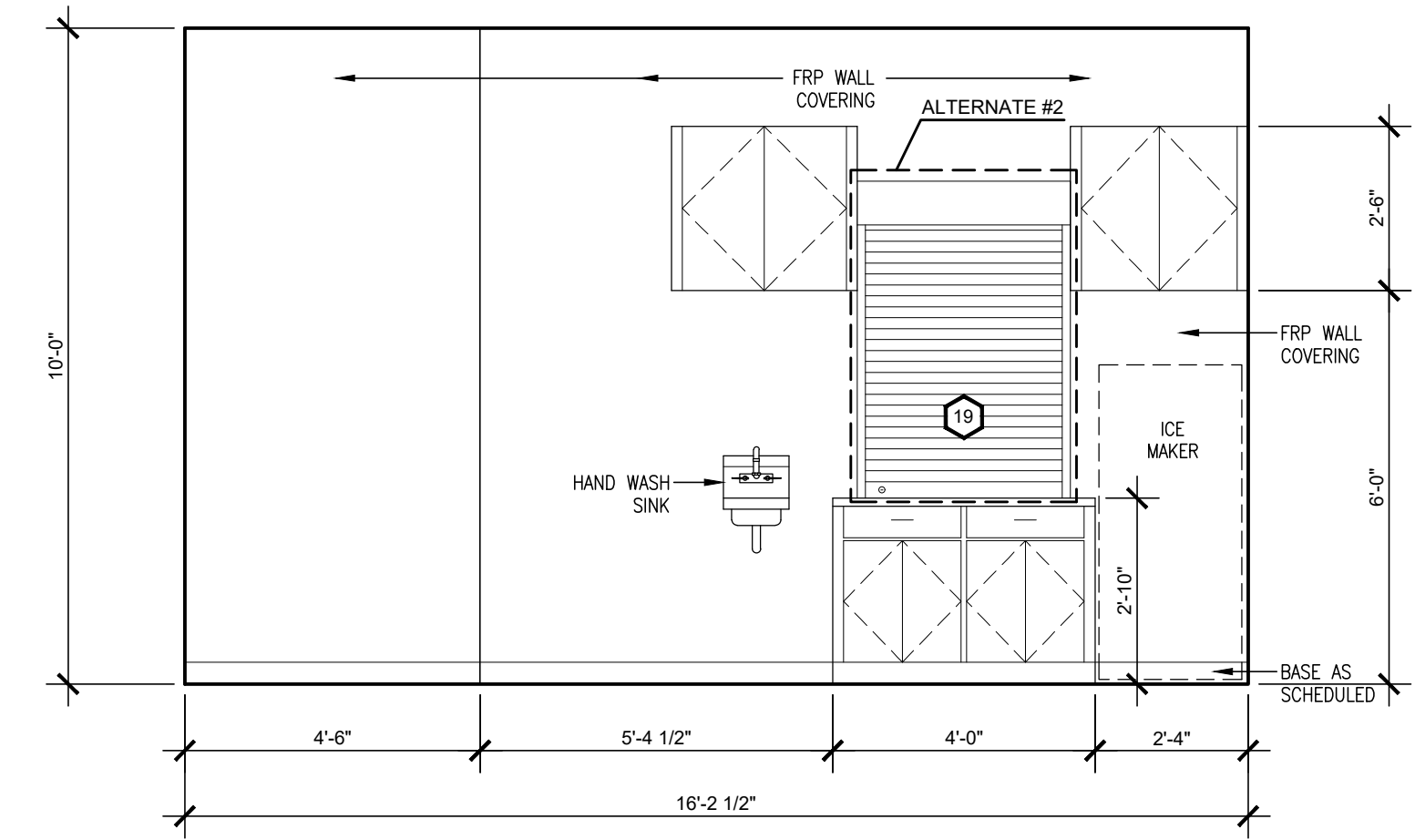


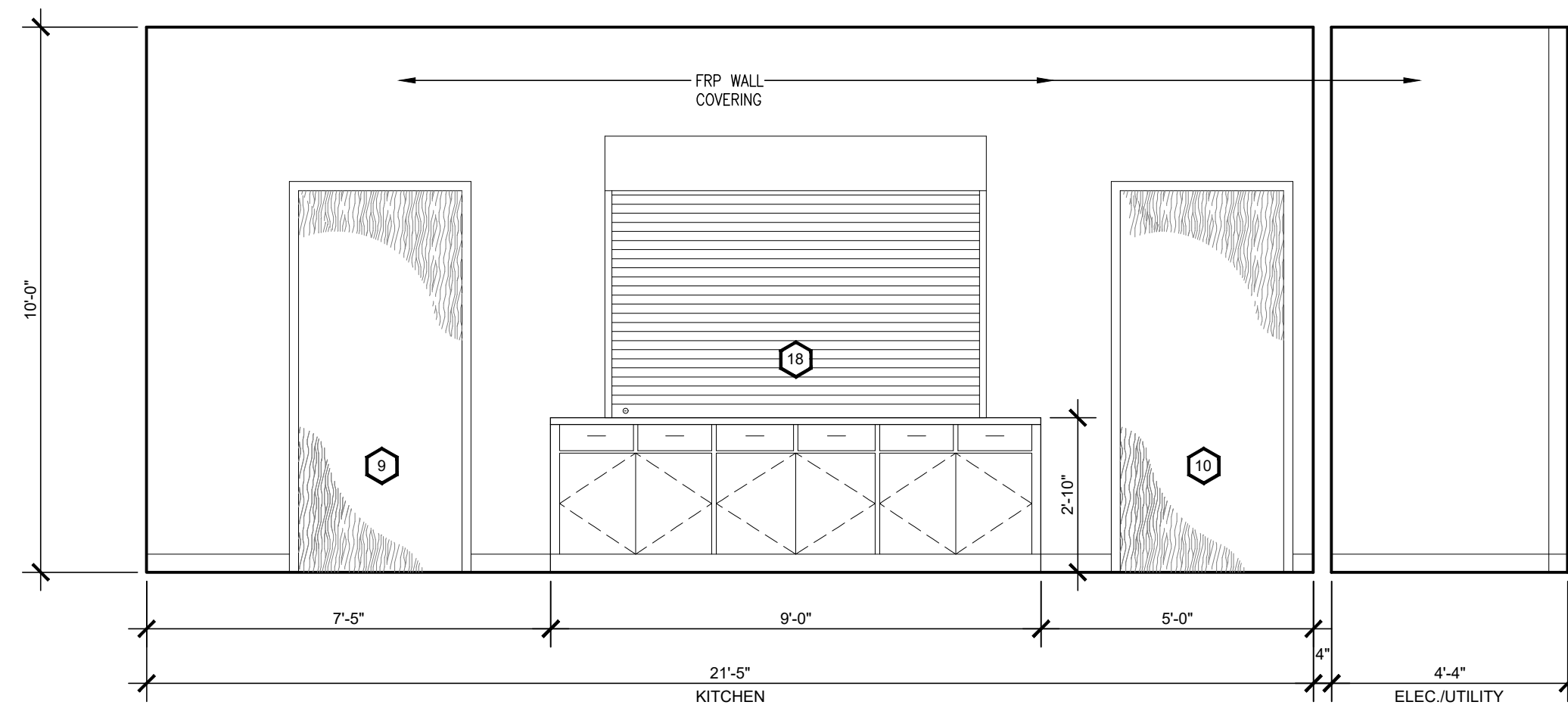
1 ELEVATION AT 208 PANTRY
SCALE = 3/8" = 1'-0"



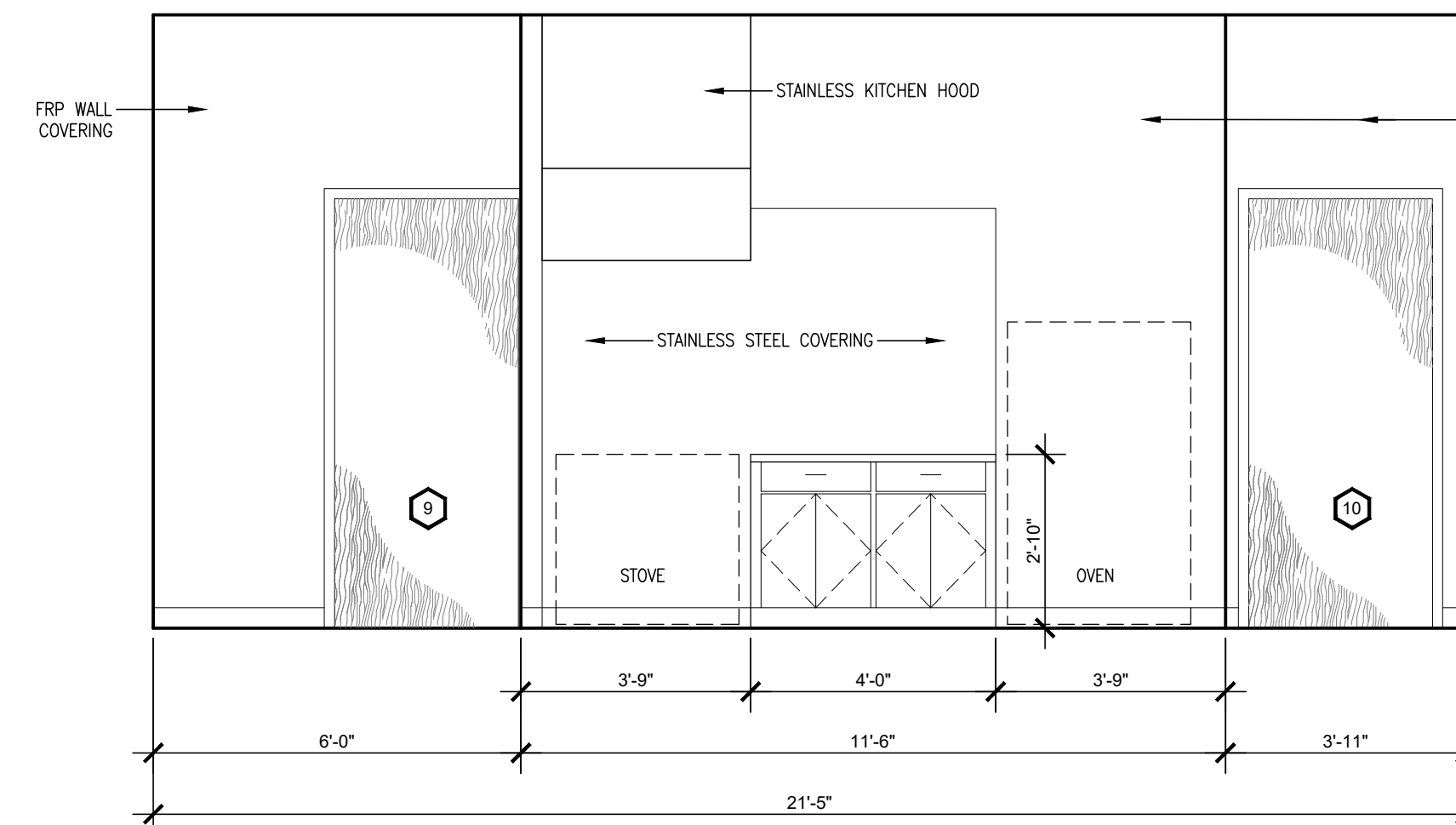
2 ELEVATION AT 208 PANTRY & 207 KITCHEN
SCALE = 3/8" = 1'-0"



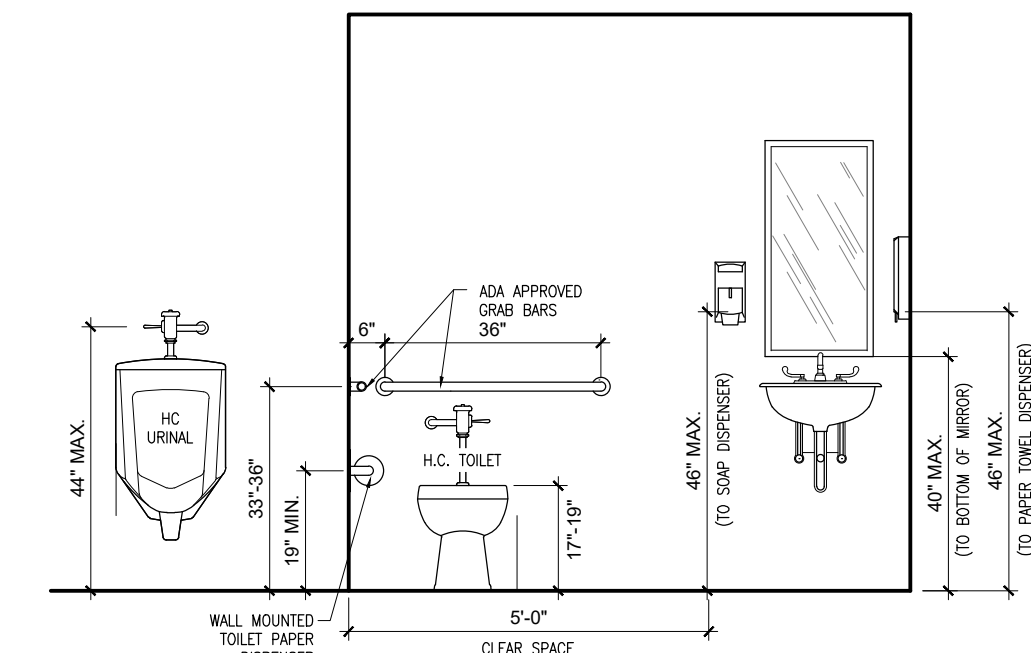
3 ELEVATION AT 207 KITCHEN
SCALE = 3/8" = 1'-0"



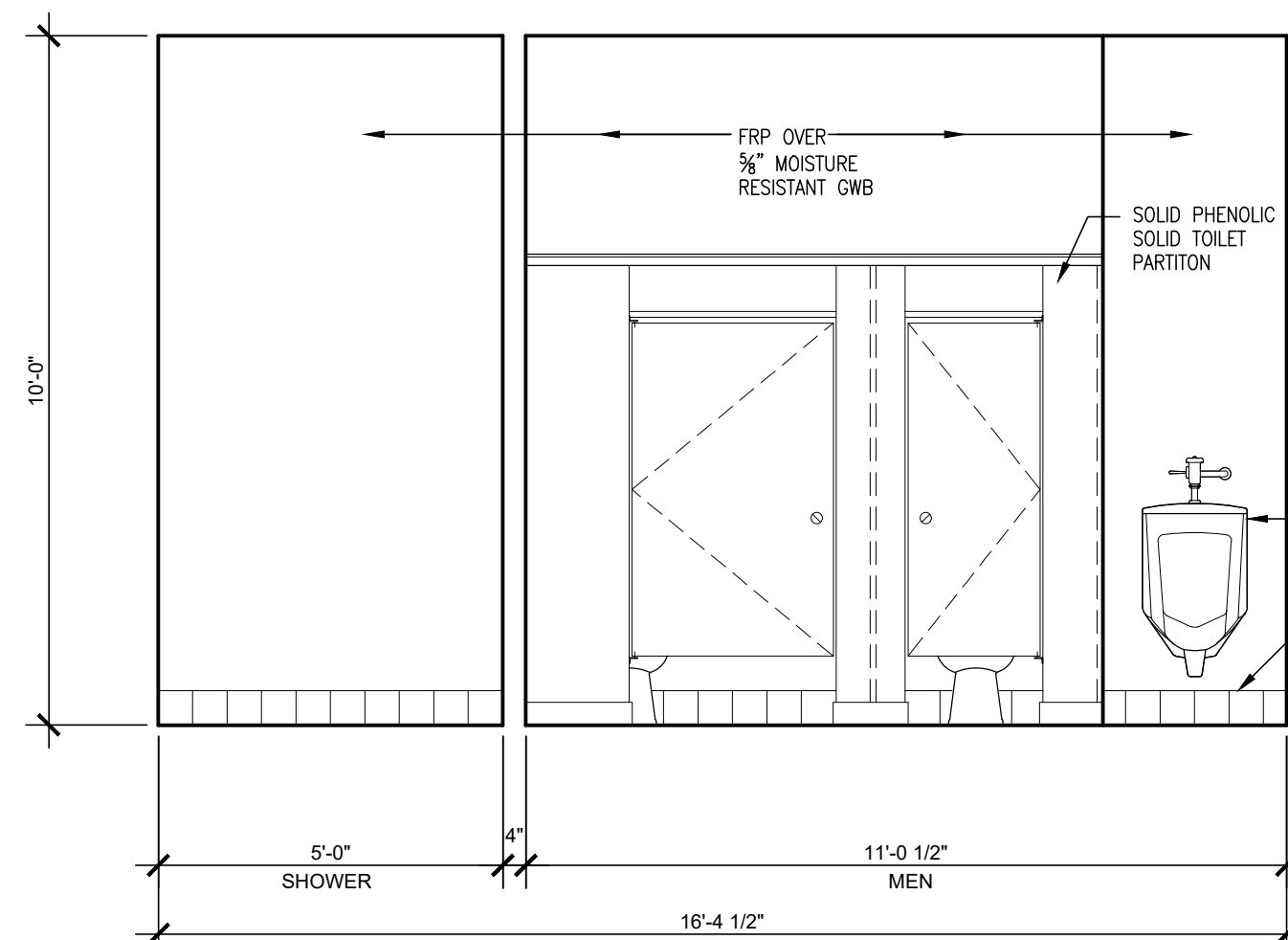
4 ELEVATION AT 207 SERVING & 209 ELEC./UTILITY
SCALE = 3/8" = 1'-0"



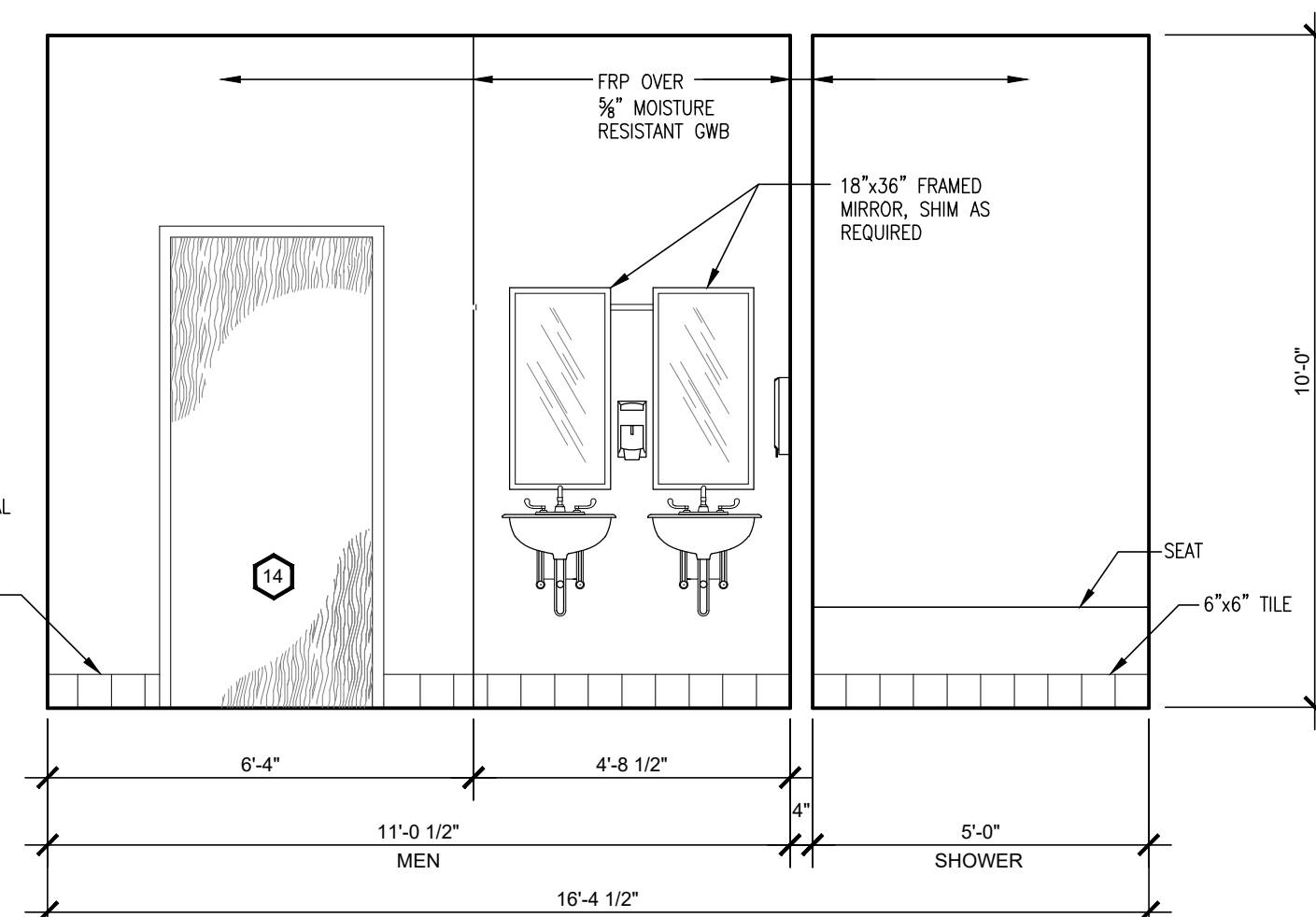
5 ELEVATION AT 207 KITCHEN
SCALE = 3/8" = 1'-0"



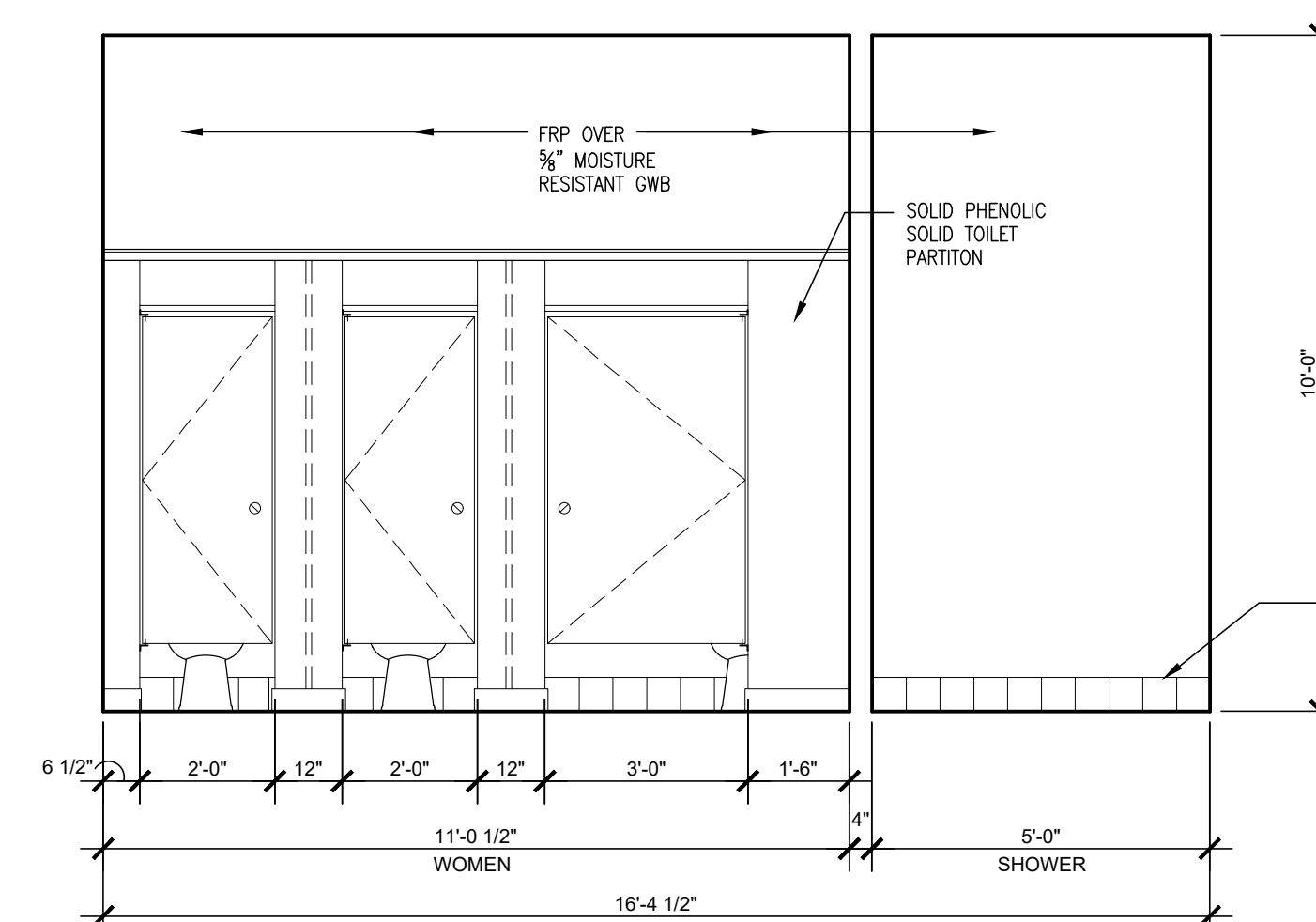
6 ADA REQUIREMENTS
SCALE = 3/8" = 1'-0"



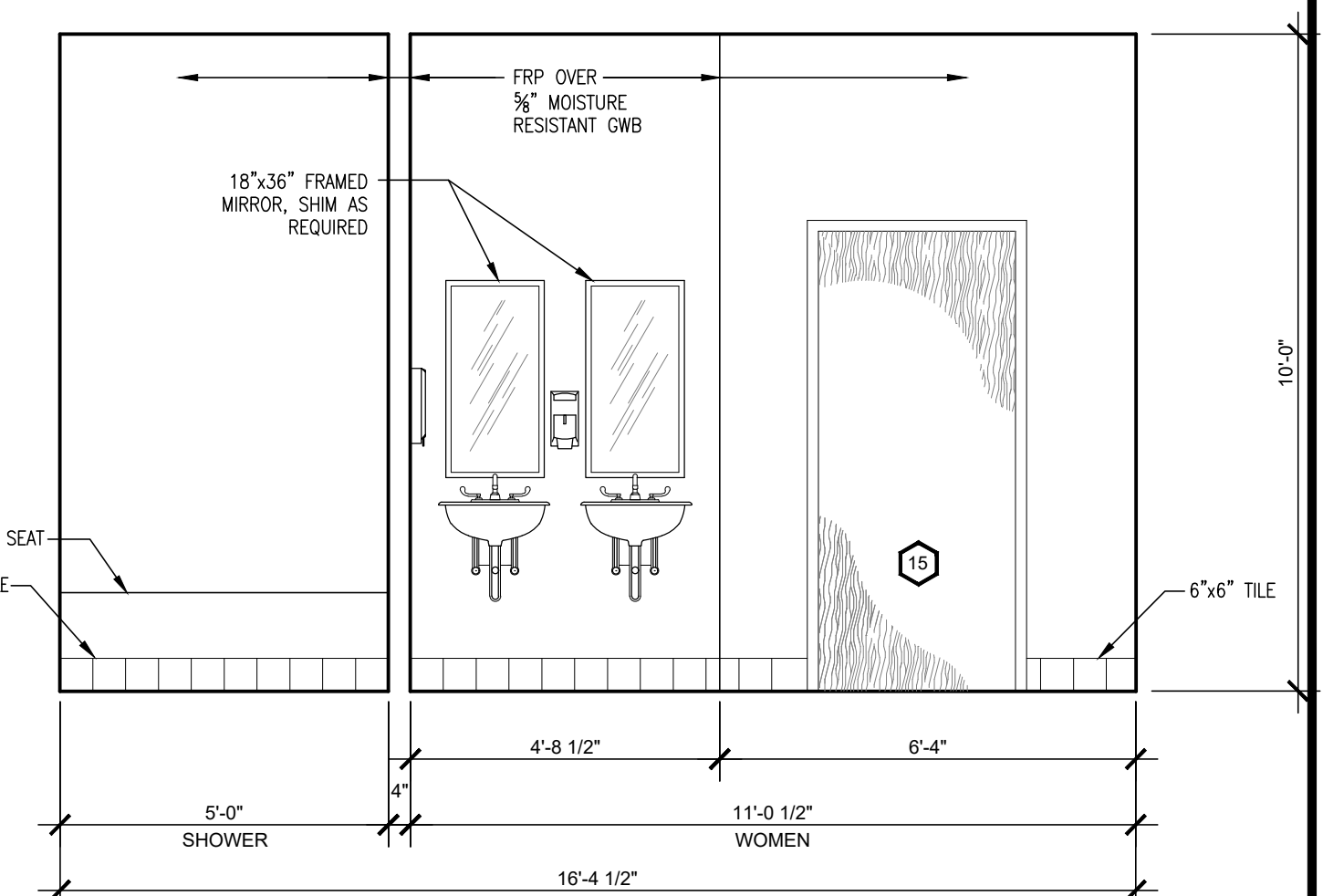
7 ELEVATION AT 212 MEN & 213 SHOWER
SCALE = 3/8" = 1'-0"



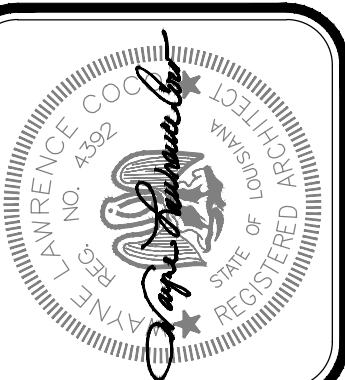
8 ELEVATION AT 212 MEN & 215 SHOWER
SCALE = 3/8" = 1'-0"



9 ELEVATION AT 214 WOMEN & 215 SHOWER
SCALE = 3/8" = 1'-0"



10 ELEVATION AT 214 WOMEN & 215 SHOWER
SCALE = 3/8" = 1'-0"



Project No. 0225
Drawn By: BP
Approved By: WAYNE L. COCO
Preliminary Date: MARCH 31, 2026
Release Date:
File:

WAYNE LAWRENCE COCO, AIA, ARCHITECT, L.L.C.
P.O. BOX 111 - 510 MAIN ST.
SIMMESPORT, LOUISIANA 71369
318.359.3732 / FAX 318.941.2821
Coco & Company
a professional architectural company

FUTURE FARMERS OF AMERICA
CONFERENCE CENTER
MANSURA, LOUISIANA AT OLD RIVER

Sheet Number:
A6.1
14 of 40